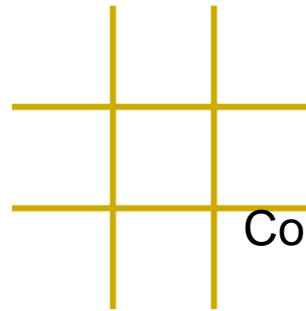


Team Terminator

A Machine Learning Game Playing Robot



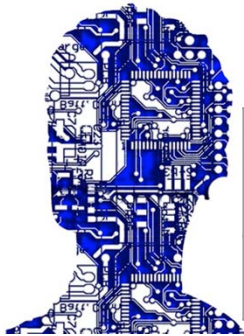
4th Progress Report

Cory Bethrant & Maxime Keita

April 3rd, 2018

Faculty Advisor: Dr. Kim
Graduate Advisor: Chidi Ekeocha

Milestone Progress



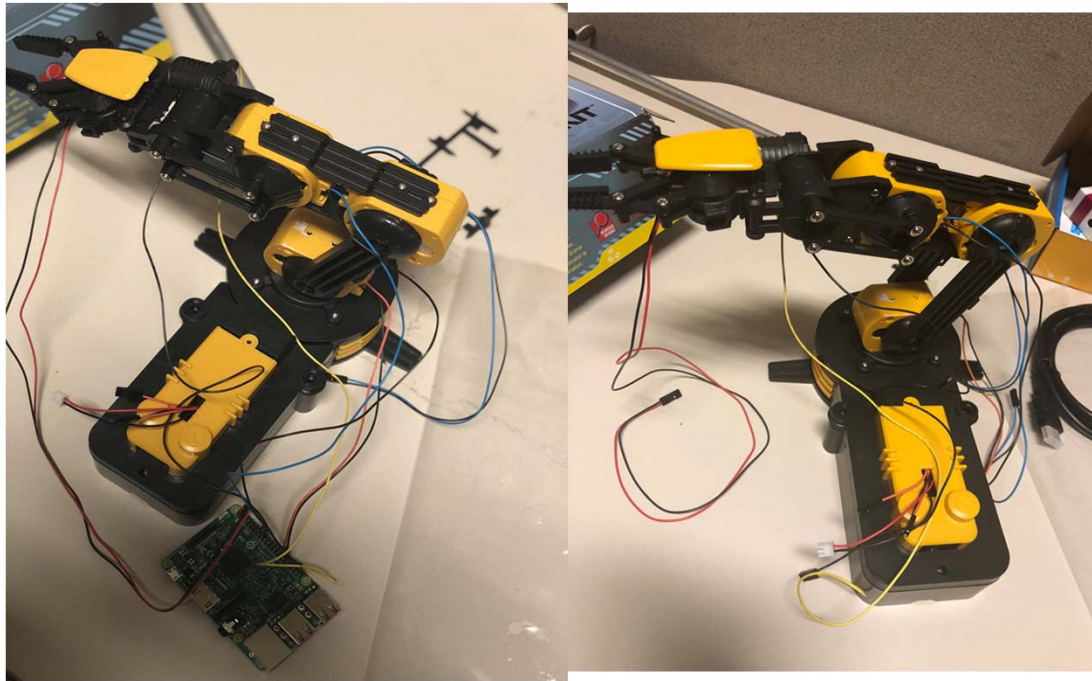
Arm Construction	Tic-Tac-Toe AI	OpenCV Detection	Arduino/Raspberry Pi Communication
Done	Done	On Going	On Going

Achievement Vs. Expectation

**Expected to be fully complete.
Still on schedule to be complete in time for Final
Presentation**



Current Progress



Activity Summary

Lowlights:

- Mechanical Engineer Student a little behind for the CAD design of the Tic Tac Toe Grid
- Still have to make event interface for AI's communication with the physical world.

Highlights

- Arm has been constructed
- AI has been tested to works
- Learning to be familiar with Raspberry Pi

EXPLORER

OPEN EDITORS 1 UNSAVED

- Untitled-1
- Untitled-2

NO FOLDER OPENED

You have not yet opened a folder.

Open Folder

```
24 def ArmMove(Duration, ArmCmd):
25
26     #Start Movement
27     Arm.ctrl_transfer(0x40,6,0x100,0,ArmCmd,1000)
28     time.sleep(Duration)
29
30     #Stop Movement
31     ArmCmd=[0,0,ArmLight]
32     Arm.ctrl_transfer(0x40,6,0x100,0,ArmCmd,1000)
33
34 #Establish a connection with the wiimote
35 print 'Connected to arm successfully.'
36 print ''
37 print 'Press 1 and 2 on the wiimote at the same time.'
38 #Connect to mote and if it doesn't connect then it tells us and tries again
39 time.sleep(3)
40 print ''
41 print 'Establishing Connection... 5'
42 time.sleep(1)
43 print 'Establishing Connection... 4'
44 time.sleep(1)
45 print 'Establishing Connection... 3'
46 Wii = None
47 while (Wii==None):
48     try:
49         Wii = cwiid.Wiimote()
50     except RuntimeError:
51         print 'Error connecting to the wiimote, press 1 and 2.'
```

TERMINAL

```
Looking for git in: C:\Program Files\Git\cmd\git.exe
Looking for git in: C:\Program Files (x86)\Git\cmd\git.exe
```

PROBLEMS OUTPUT DEBUG CONSOLE TERMINAL

Git

Ln 1, Col 1 Spaces: 4 UTF-8 CRLF Plain Text

Risks/Mitigation

Risks

- Camera original installation place might be a problem when moving the arm.

Mitigation

- Determined not to be the case as long as it is attached properly.

Steps To Be Completed

- Completion of Raspberry Pi Integration
- Completion of OpenCV event listener
- Linking Together All Processes
- Testing