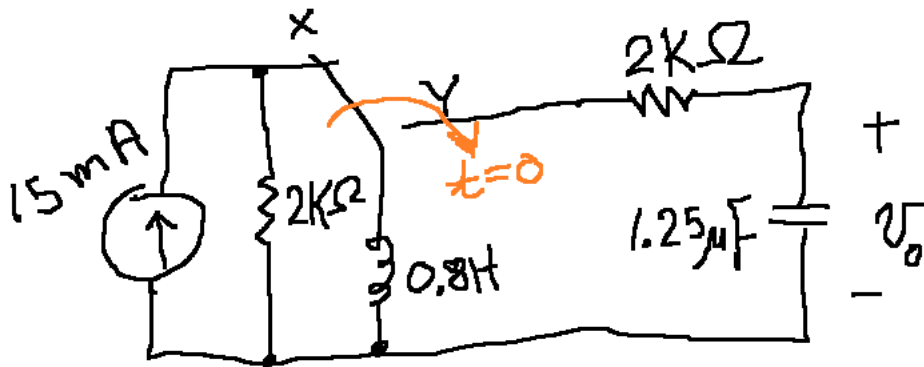


EECE499 - HOMEWORK #4

Due (F) March 4

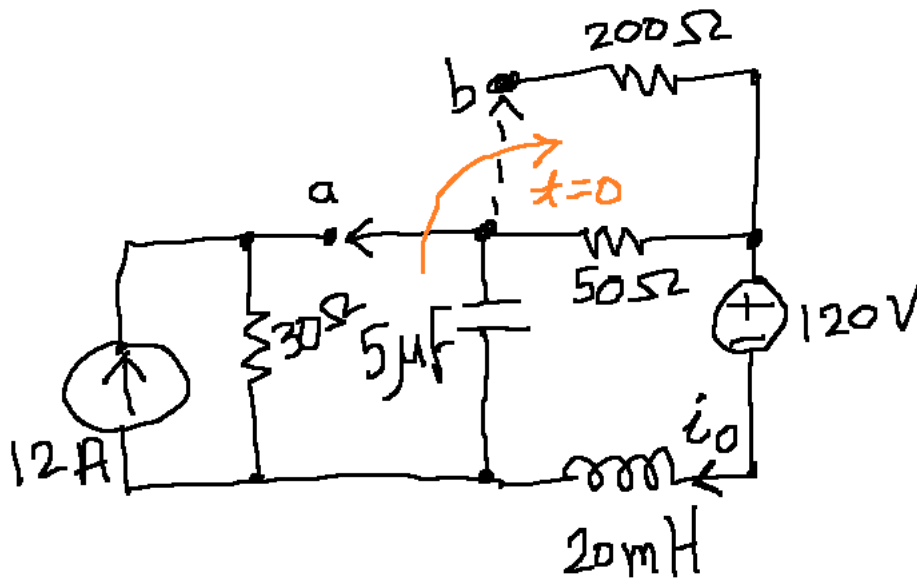
1. The switch in the circuit shown below has been in position x for a long time. At $t=0$, the switch moves instantaneously to position y.

- Construct an s-domain circuit for $t > 0$.
- Find $V_0(s)$.
- Find $v_0(t)$.

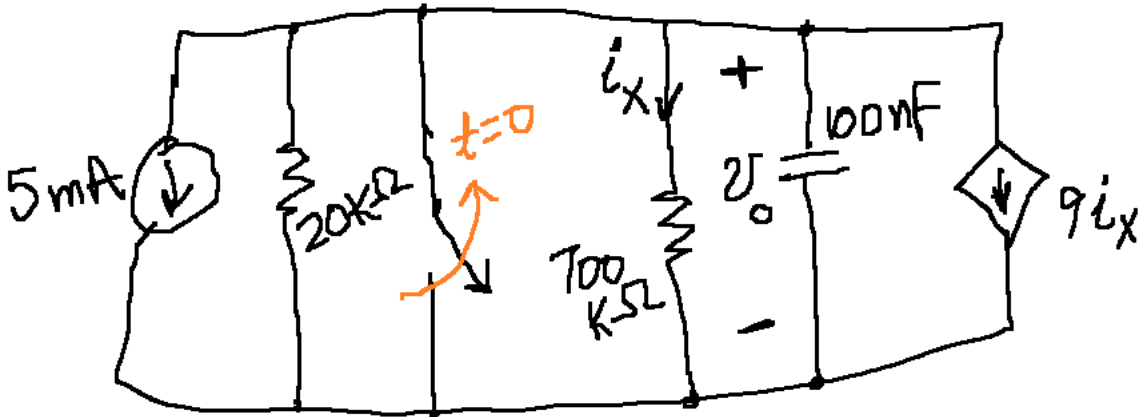


2. The switch in the circuit shown below has been in position a for a long time. At $t=0$, the switch moves instantaneously from a to b.

- Construct an s-domain circuit for $t > 0$.
- Find $I_0(s)$.
- Find $i_0(t)$.



3. The switch in the circuit shown below has been closed for a long time. At $t=0$, the switch opens.
- Construct an s-domain circuit for $t>0$.
 - Find $V_0(s)$.
 - Find $v_0(t)$.



4. The switch in the circuit shown below has been closed for a long time. At $t=0$, the switch opens.
- Construct an s-domain circuit for $t>0$.
 - Find $V_0(s)$.
 - Find $v_0(t)$.

